

Department - 2012	Expense
Administrative & General	\$ 344,597
Program Services	\$ 2,250,971
Program Fundraising	\$ 603,755
Community Education	\$ 292,651
Total 2012 Expenses	\$ 3,491,974

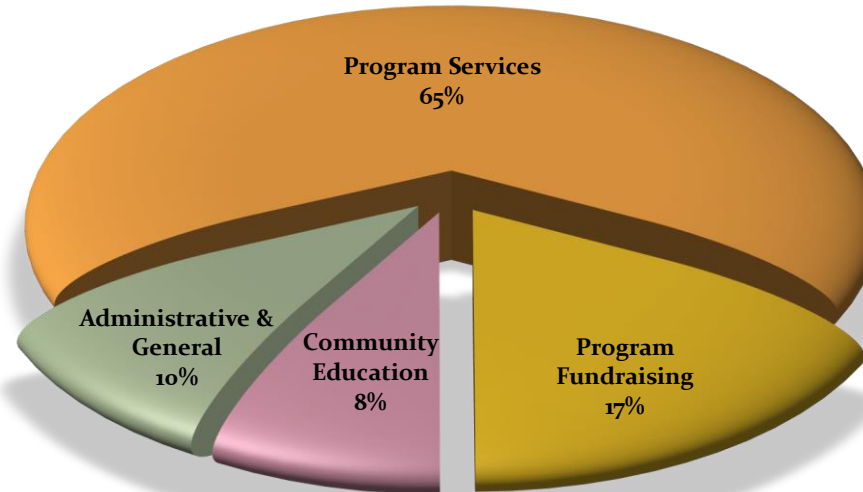
Joy Junction Mission Statement

Joy Junction provides a hand up to homeless and hungry women, children, and families.

With food, shelter, clothing, recovery programs, and life skills training, we empower individuals to re-enter mainstream society and break the cycle of homelessness, one life at a time.

Joy Junction Expenses by Department

Totals from 2012 audited statements



Joy Junction 2012 Highlights

In 2012, Joy Junction served approximately 255,000 meals in total, and provided as many as 110,000 nights of safe, warm shelter. Our Lifeline of Hope mobile food outreach was out on the streets of Albuquerque 7 days a week providing food and encouragement, and our annual Thanksgiving and Christmas Homeless Feast events served a total of almost 4,000 homeless and hungry persons at the Albuquerque Convention Center. Almost 200 people attended our nine month life recovery program, featuring a Biblical twelve step program, life skills and more, designed to offer a hand-up, not a hand-out. Upon graduation, most program participants are ready to return to mainstream society.

From a financial and stewardship perspective, the percentage of administrative and general expenses has fallen for the sixth straight year. One hundred percent of the revenue received by Joy Junction comes from non-government sources: individuals, churches, businesses and foundations. Thank you for your support!